

OptiVISOR

Manufactured from high quality optical glass prepared to ophthalmic standards. Frames are light in weight, durable and impact resistant. The visor is pivot-mounted to the headband so that it may be adjusted to any position. Headband is adjustable and leather-lined for comfort. Lens plates are interchangeable. Made in USA.



Style	Power	Focal Distance	Price	Item No.
DA2	1 1/2X	20"	\$31.50	29.470
DA3	1 3/4X	14"	\$31.50	29.471
DA4	2X	10"	\$31.50	29.472
DA5	2 1/2X	8"	\$31.50	29.473
DA7	2 3/4X	6"	\$33.00	29.474
DA10	3 1/2X	4"	\$33.00	29.475

Focal distance or working distance (comfortable distance from visor to work area) is very important when selecting Optivisor.

OptiVISOR

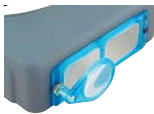
REPLACEMENT LENS PLATES



Lens	Power	Focal Distance	Price	Item No.
#2	1 1/2X	20"	\$22.00	29.485
#3	1 3/4X	14"	\$22.00	29.486
#4	2X	10"	\$22.00	29.487
#5	2 1/2X	8"	\$22.00	29.488
#7	2 3/4X	6"	\$23.00	29.489
#10	3 1/2X	4"	\$23.00	29.490

OPTI LOUPE

Fits on either side of Optivisor and adds 2 1/2X to the magnification. Swings away when not in use.



29.480 \$8.50

OptiSIGHT™

Magnifying visor provides hands-free magnification for more accurate and efficient viewing of small pieces when stringing, sorting, setting, etc. Adjustable headband for comfort. Visor tilts up for normal viewing and flips down for magnification. Work is brought into focus, reducing eye strain and fatigue. Comes with 3 interchangeable lens plates (1 1/2X, 2X, 2 1/2X) for different applications.



LS453 Red \$22.50 **LS455** Gray \$22.50

OptiSIGHT™

REPLACEMENT LENS PLATES



Lens	Power	Focal Distance	Price	Item No.
#3	1 1/2X	14"	\$6.85	LS456
#4	2X	10"	\$6.85	LS457
#5	2 1/2X	8"	\$6.85	LS458

MEGAVIEW

Headband magnifier for viewing micro-fine details without distortion. Comfortable and easily adjustable headband. Light in weight, high quality interchangeable, easy snap-on/off lenses with 2X, 2 1/2X and 3X magnifying power. Made in Japan. Replacement lenses available.



LS400 Megaview with 3 lenses \$69.80

WILLSON® VENTILATED SAFETY GOGGLES

Inexpensive, impact resistant goggles provide complete eye protection from sparks and debris during grinding and polishing. Ventilated side guards provide comfort and reduce fogging. Fits over most spectacles. Adjustable strap. One size fits all. Meets ANSI Z87.1-1989 specifications.



SFT105 \$3.75

CREWS TOMAHAWK SAFETY GLASSES

Stylish, clear, protective eyewear with 3-position adjustable arms and wrap-around sides. Made from one piece of polycarbonate lens with integral sideshields. Lightweight, nylon frames add comfort and balance. Meets ANSI Z87.1-1989 requirements.



SFT110 \$5.50

WILLSON® POLYSAFE SAFETY GLASSES

Comfortable, clear, shatter-resistant eyewear designed to fit over most prescription glasses. Provides clear, distortion-free vision. Uncoated polycarbonate lens wraps around top and sides with clear sideshields for extra protection. UV protection. Meets ANSI Z87.1-1989 requirements.



SFT115 \$5.25

SAFETY GOGGLES for PLATINUM

Light plastic wrap-around frames with safety colored lenses protect eyes when soldering or melting platinum.



Use	Shade #	Price	Item No.
Soldering	5	\$15.50	GLS100.05
Melting	7	\$15.50	GLS100.07

UVEX® SOLDERING and CASTING GLASSES

Black frame glasses with protective side guards. Flip-down polycarbonate shade #5 infradura, anti-fog, anti-static, anti-scratch, anti-UV green lenses for use when soldering, welding, enameling and casting silver or gold. Meets ANSI-Z80.3 requirements. Flip-up the lenses for use as untinted safety glasses.



SFT120 \$39.50

XTRALITE SOLDERING, MELTING and WELDING GOGGLES

Flip-up safety glass lenses protect eyes against light, impact, dirt, small particles and sparks. Flip-down #5 filter shade protects eyes when soldering, welding and melting metal. Plastic wrap-around frame hugs facial contour for protection and comfortable fit. Ventilated for cooling and evaporation. Equipped with adjustable elastic headband.



SFT125 \$17.80

ECONOMY EYE LOUPES

Lightweight loupes with a round and polished lens set in a black plastic holder. Provides distortion-free viewing. Available in different focal distances.



Power	Focal Length	Price	Item No.
10X	1"	\$2.25	LW110
7X	1 1/2"	\$2.25	LW115
5X	2"	\$2.25	LW120
4X	2 1/2"	\$2.25	LW125
3X	3 1/2"	\$2.25	LW135
2X	5"	\$2.25	LW145

ALUMINUM EYE LOUPE

A high quality, lightweight and durable loupe. Distortion-free lens (1 1/8" diameter). Inside of aluminum housing is blackened to eliminate glare.



Power	Focal Length	Price	Item No.
10X	1"	\$2.25	ELP205.10

BAUSCH & LOMB WATCHMAKER'S LOUPES

Optical precision-ground, lightweight lens (1" diameter) provides a clear field of view where magnification is needed. Loupe rests comfortably in the eye socket keeping both hands free to work



Power	Focal Length	Price	Item No.
10X	1"	\$16.25	LW210
7X	1 1/2"	\$13.50	LW207
5X	2"	\$13.50	LW205
4X	2 1/2"	\$13.50	LW204

BAUSCH & LOMB HASTINGS TRIPLET LOUPES

The finest B & L loupes. Three lenses bonded together to form a compound lens provide sharp, very distinct, magnified images. No color distortion. Lens swings into nickel-plated case.



Power	Focal Length	Lens Dia.	Price	Item No.
10X	1"	15.8mm	\$34.50	LD210
14X	3/4"	12.5mm	\$41.50	LD214
20X	1/2"	8.25mm	\$41.50	LD220

BAUSCH & LOMB CODDINGTON LOUPES

Single lens constructed loupes with an internal diaphragm to provide a larger field of distortion-free viewing.



Power	Focal Length	Lens Dia.	Price	Item No.
10X	1"	19.7mm	\$27.50	LD230
14X	3/4"	15.7mm	\$29.50	LD234
20X	1/2"	12.4mm	\$29.50	LD240

LOUPE CHAINS

Always know where your loupe is! Attach it to the swivel at the end of the chain. Wear chain around neck or attach chain to bench. 38" length.



Color	Price	Item No.
Gold	\$4.25	LD204
Chrome	\$4.00	LD205



FOLDING MAGNIFIER

Large lens (4 1/8" diameter) 3X magnifier has enough height (6") and size for both hands to hold object under. Perfect for bead stringers. Folds into a 1 1/2" thick compact size.



[ELP800.03](#) \$10.50

ECONOMY 10X DOUBLET LOUPES

Doublet loupes with 10X power lenses. Distortion-free viewing. 1" focal point. Chrome finish.



Power	Lens Dia.	Price	Item No.
10X Doublet	23mm	\$9.25	ELP765.23
10X Doublet	17mm	\$8.25	ELP765.17

ECONOMY 10X TRIPLET LOUPES

Quality triplet loupes with 10X power lenses. Distortion-free viewing. 1" focal length. Comes with leather carrying case.



Color	Power	Lens Dia.	Price	Item No.
Black	10X Triplet	18mm	\$7.75	ELP744.01
Gold	10X Triplet	18mm	\$7.75	ELP744.02
Chrome	10X Triplet	18mm	\$7.75	ELP744.03

10X DIAMOND TRIPLET LOUPES

High quality, bonded triplet loupes for distortion-free viewing. Edge-to-edge clarity is the finest available. Highly corrected for spherical and chromatic aberrations. Traditional old world color finishes. Specs: Power – 10X triplet. 1" focal length. Shape – oval. Packaged in leather case with box.



Color	Lens Dia.	Price	Item No.
Black Matte	18mm	\$15.50	ELP750.01
Goldtone	18mm	\$15.50	ELP750.02
Chrome	18mm	\$15.50	ELP750.03

FANCY COLORED 10X DIAMOND TRIPLET LOUPES

Vibrantly colored loupes. High quality, bonded triplet lenses for distortion-free viewing. Edge-to-edge clarity is the finest available. Highly corrected for spherical and chromatic aberrations. Specs: Power – 10X triplet. 1" focal length. Shape – oval. Packaged in leather case with box.



Color	Lens Dia.	Price	Item No.
Pink Marble	18mm	\$16.50	ELP753.08
Black Marble	18mm	\$16.50	ELP753.07
Brown Tortoise	18mm	\$16.50	ELP753.04
Green Malachite	18mm	\$16.50	ELP753.06
Blue Lapis	18mm	\$16.50	ELP753.05

PORTABLE MAGNIFIER

Portable 2X magnifier leaves both hands free. Wide 4" x 5" viewing area. Crystal clear, non-distracting frame with stable foot pads and adjustable neck cord, holds magnifier steadily in place. Great for bead stringing and wax carving.



[ELP560.02](#) \$13.25